



Sinocare Inc.



pts Diagnostics



iCARE-2100

Portable Automatic
Multi-function Analyzer

Core Technology

— **Liquid Phase** *iPOCT*



Quick Reference Guide

① Preparation



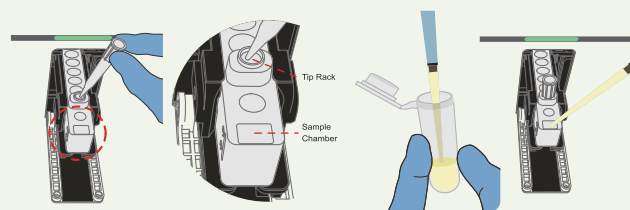
1. Switch on the analyzer, wait for 5 minutes to enter the Home Page.
2. Open the box, take out a reagent cartridge. Gently shake the reagent cartridge up and right for several times to allow the liquid on the inner side of the membrane to fall into the chamber. Place the reagent cartridge upright on the table to warm to room temperature.

Warning: Please do not touch the test area during the whole test process, or the test result may be affected.

② Test Application



1. Touch 'Test' to enter the test interface.
2. Touch 'New Test' to enter the Test Menu.
3. Input the sample information, touch 'Open/Close Lid' to open the lid of the corresponding test channel.



2. Sample adding (applicable for all test items except the items listed in step 3: 3. Particular sample adding): use pipettor to transfer 150 μ L sample into the outermost square chamber.

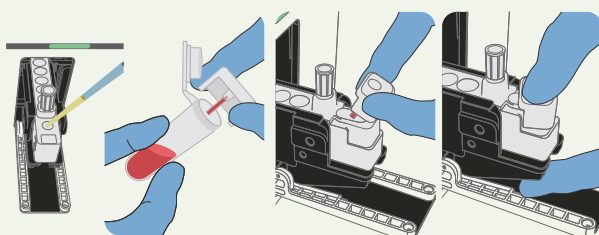
③ Add sample, insert the tip

1. Place the reagent cartridge into cartridge holder, and push it gently to the position shown on the illustration below: the outer edge of the reagent cartridge is just within the holder, and cannot be pushed forward. Insert the tip into the cartridge.

3. Special sample adding:
 - a) APTT / PT / TT / FIB Reagent Kit Sample adding: use pipettor to transfer 400 μ L sample into the outermost circular chamber.

b) Glycated Hemoglobin Reagent Kit (Boric Acid Affinity Liquid Chromatography /Chromatography): Use sampling tip to collect 5 μ L whole blood sample. Insert the sampling tip into the sample chamber and press tightly.

Note: for this reagent kit, it makes no difference if the sample is added directly into the sample chamber before placing the reagent cartridge into the cartridge holder and inserting the empty sampling tip.



4 Start testing. The interface displays countdown

1. Select the test channel, touch 'Start'.
2. After a "beep" sound, the interface displays the corresponding test item, the test time countdown is on the right of the text State. Wait for the test to complete.



5 Test complete. Read test result.

The state changes to 'idle' when the test completes. Touch "Info" to read the test result.



Specification

Accuracy

Liquid Phase reaction system.
Self-Contained & Single Use Cartridge.

Display

9.7 Inch touch Screen
1024*768p Resolution.

Printer

Built-in Thermal Printer.

Data Storage

80000 samples Test Results.
& 10000 QC Test Results.

Unique Tip

Sharp Sample Probe.

Fast

Need only 3-15 Minutes test time.

Easy operation

No need of Professional operation/calibration, fully integrates & automates.

Analyzer Storage & Transportation

-20 to 55 Degree C

Reagent Kit Storage & Transportation

2 to 8 Degree C

Power Requirements

Rated Voltage 100 - 240V AC
(Voltage Fluctuation $\pm 10\%$)

Rated Power: 160W

Frequency: 50/60V

Barcode

- Calibration equation
- Batch number
- QC information

Disposable TIP

Sample chamber
(Plasma-400ul)

Sample chamber
(Serum/Urine/
Plasma-150ul)

Detection area

- Reaction chamber
- Combination of single/integrated reagent
- Preloaded



16 Panels & 37 Parameters

No.	Reagent Cards	Parameters	Methodology	Specimen	Volume	Time
1	HbA1c	HbA1C	Boric Acid Affinity Liquid Chromatography	Whole blood	5µl	3min
2	Diabetes Mellitus	Glu, GA	Enzymatic method	Serum	150µl	9min
3	Diabetes Mellitus II	1,5-AG	Enzymatic method	Serum	150µl	11min
4	ACR	mALB, Ucr, mALB/Ucr	Fluorescence / Benedict-Behre method	Urine	150µl	10min
5	Inflammation	FR-CRP	Latex immunoturbidimetry	Serum	150µl	8min
6	Inflammation II	FR-CRP, SAA	Latex immunoturbidimetry	Serum	150µl	9min
7	Liver Function	ALT, AST, Tbil, Alb	Rate method / end-point method	Serum	150µl	12min
8	Liver Function II	D-bil, TP, ALP, GGT	End-point method/rate method	Serum	150µl	13min
9	Renal Function	Urea, Crea, UA	Enzymatic kinetic method / end-point method	Serum	150µl	10min
10	Renal Function II	β2-MG, Cys-C	Latex immunoturbidimetry	Serum	150µl	12min
11	Blood Lipid	TC, TG, HDL, LDL-C	Enzymatic method	Serum	150µl	12min
12	Chronic disease screening	Glu, HCY, UA, LDL-C	Enzymatic method	Serum	150µl	12min
13	Myocardial Enzyme	CK, CK-MB, LDH, α-HBDH	Rate method	Serum	150µl	14min
14	Digestive System Screening	TBA, CHE, α-AMY	Rate method	Serum	150µl	10min
15	Coagulation	PT, APTT, TT, FIB, INR	Clotting method	Plasma	400µl	15min
16	Prothrombin time/INR	PT, INR	Clotting method	Plasma	150µl	12min

Compatible with your data management system, Free Control with each pack.

Low Cost without additional consumables & no daily maintenance required.



Manufactured By:
Changsha Sinocare Inc.
No.265 Guyuan Road, Hi-tech Zone
Changsha, Hunan Province, 410205, P.R.C.
email- info@sinocare.com

RC REP Lotus NL B.V.
Koninging Julianaplein 10, le Verd,
2595AA, The Hague, Netherlands.

Imported & Marketed by:
pts Diagnostics India Private Limited
(Polymer Technology Systems Inc. USA)
No. 4,5th Main 9th Cross Road, GS Plaza Building,
Jayamahal Extn., Bangalore 560046
www.ptsdiagnosticsindia.com
Customer Care No- 7530063636